

**Tobacco
Health
Systems
Change**



How Can the EHR Help You Identify and Intervene with Patients Who Use Tobacco?

ICSI Institute for Clinical
Systems Improvement
Transforming health care, together

ClearWaySM
MINNESOTA



• **Amy Skora, BS, Southern Regional Outreach Specialist** – *University of Wisconsin School of Medicine and Public Health ~ Center for Tobacco Research and Intervention*

• **Rob Adsit, MEd, Director of Education and Outreach** - *University of Wisconsin School of Medicine and Public Health ~ Center for Tobacco Research and Intervention*

• **Jill Doberstein, MA, CTTS, Supervisor Tobacco Cessation Program** – *Essentia Health*



ICSI Institute for Clinical
Systems Improvement
Transforming health care, together

ClearWay[™]
MINNESOTA



UW-CTRI

UNIVERSITY OF WISCONSIN

**Center for Tobacco
Research & Intervention**

Amy Skora

University of Wisconsin School of Medicine and Public Health

Center for Tobacco Research and Intervention

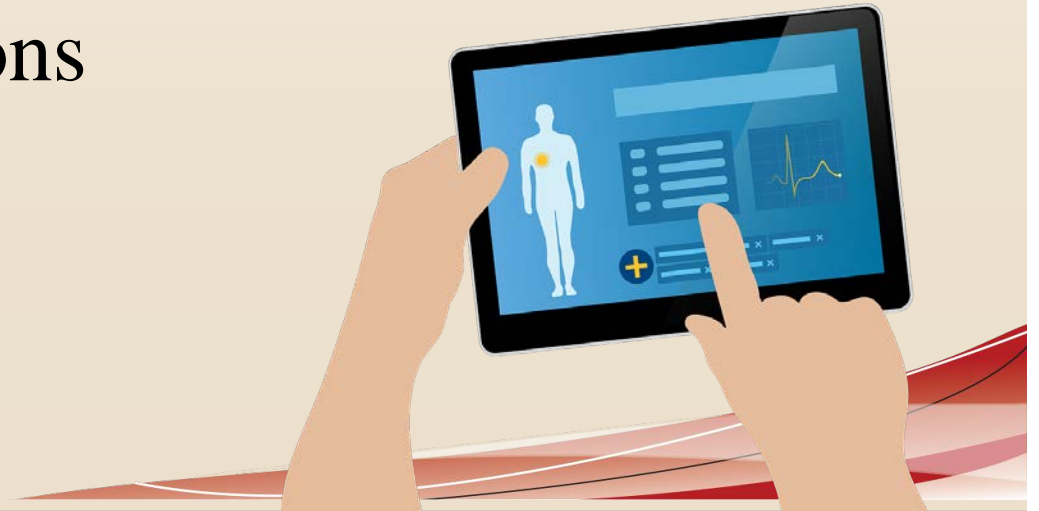
May 17, 2018

Outline

- Universal tools available to initiate brief interventions and address tobacco use as a chronic disease
- Epic System's 'Healthy Planet' program tobacco cessation components as a population health approach
- Key strategies to make connections with system leadership and Information Technology staff

Electronic Health Record (EHR) and Tobacco Interventions

- Effective and efficient delivery of evidence-based smoking cessation treatments to patients is a key public health need
- Innovative adoptions of EHR technology can drive evidence-based tobacco cessation treatment interventions



Buy-In and Support Needed

- Medical/clinical leadership
- Administration leadership
- Information Technology leadership
- Champion clinician(s)
- EHR vendor
- Quitline vendor
- Resource allocation (human and fiscal)

Identify Champion(s) Within the Healthcare System

Think broadly:

- Quality Improvement
- Nurses
- Physician Assistants
- Medical Assistants
- Administrators
- Clinic Managers
- Physicians



Tobacco Use as a Chronic Disease

- Characterized by high rates of relapse following periods of abstinence
- Smoking should be approached as aggressively as other chronic diseases that are amenable to interventions
- Use EHR tools to help address tobacco use as a chronic disease by providing effective brief interventions for patients who smoke

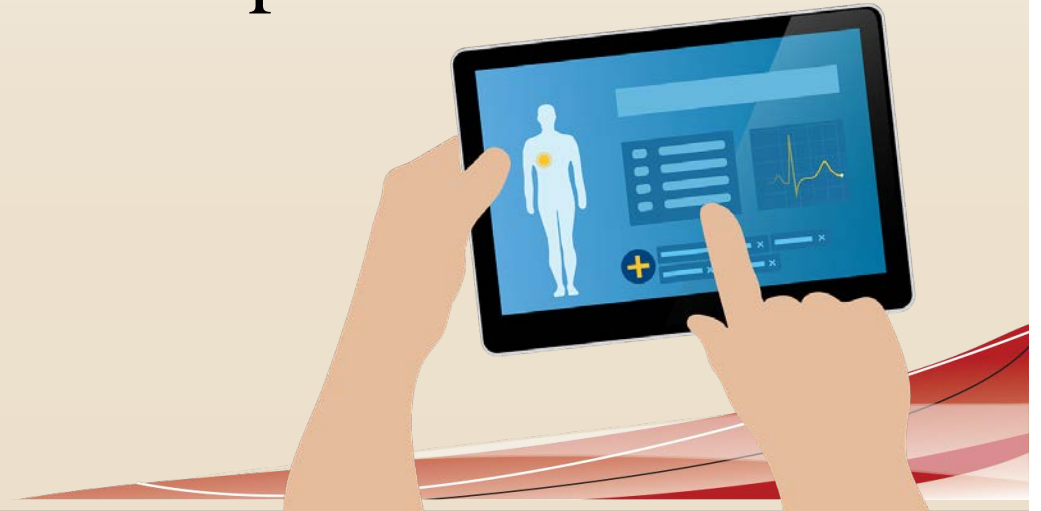
Utilizing the EHR

EHR technology creates capacity to intervene with patients who smoke to:

- Universally identify and document tobacco use status
- Guide clinicians in a brief clinical intervention
- Refer patients to external resources
 - HIPAA-compliant
 - Closed-loop

Universal EHR Tools

- Tobacco Registry
- Dashboard
- Best Practice Advisory
- SmartSet
- Referral Orders
- Referral Order Results
- Interfaces
- Reports



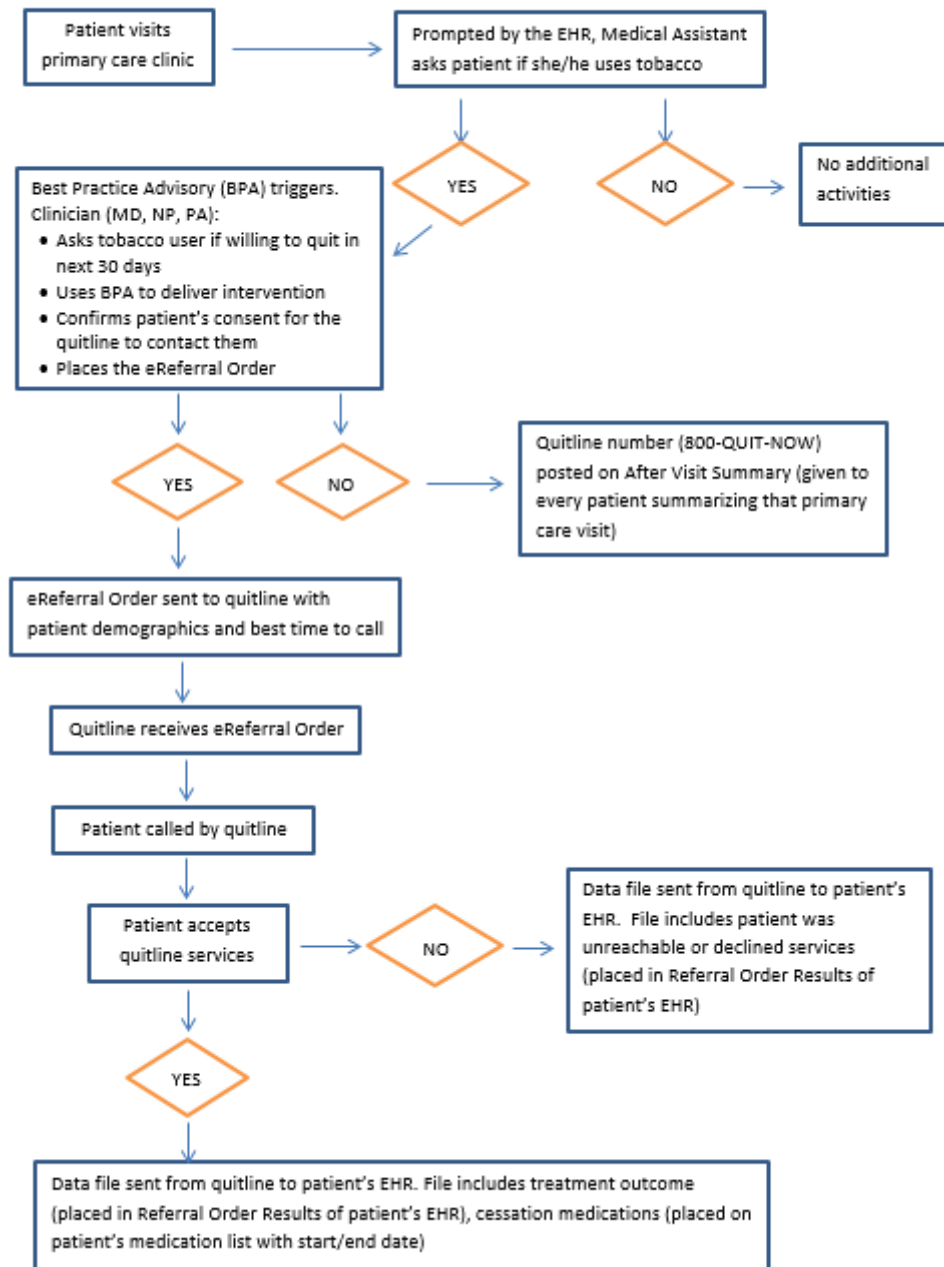
Determine the Workflow

Critical for IT build and crucial for clinician engagement

- Brief Intervention – 5As
 - Integrated in the EHR
 - Determine which clinicians take part in office visit workflows
- Referrals to treatment extenders
- Closed loop: Referral outcomes return to EHR and notify clinician

Workflow

Electronic Health Record (EHR)-based Referral (eReferral) to the Wisconsin Tobacco Quit Line with Quitline Treatment Services Feedback to Referring Clinician via Patient EHR



Adsit R, Fox B, Tsiolis T, et. al. *Using the Electronic Health Record to Connect Primary Care Patients to Evidence-based Telephonic Tobacco Quitline Services: A Closed-loop Demonstration Project.* *Transl Behav Med.* 2014 Sep; 4(3): 324–332.

Tobacco Use Assessment

Vitals

Taken on 12/19/2007 at 1436

BP:	118/76	SpO2:	
Pulse:	88	Weight:	180 lbs (81.65 kg)
Resp:		Height:	6' (1.829 m)
Temp:			
Source:	<input type="text"/>	PF (best):	<input type="text"/>

LMP:

Tobacco Use **Verify** Edit

Not Asked


Types: Cigarettes, Cigars, Chewing
Packs/Day: Years: Pack Years: 0

Last verified: <Never verified>

Restore Close F9 Previous F7 Next F8


Adsit R, Fox B, Tsiolis T, et. al. *Using the Electronic Health Record to Connect Primary Care Patients to Evidence-based Telephonic Tobacco Quitline Services: A Closed-loop Demonstration Project.* *Transl Behav Med.* 2014 Sep; 4(3): 324–33

Best Practice Advisory

 Let's talk about your smoking. I would like to connect you with free nicotine medicine and free phone support to help you stop smoking in the next month. Are you willing to accept a call from the Wisconsin Tobacco Quit Line?

Order

Do Not Order

 WISCONSIN TOBACCO QUIT LINE
REFERRAL

Acknowledge Reason _____

Patient declines

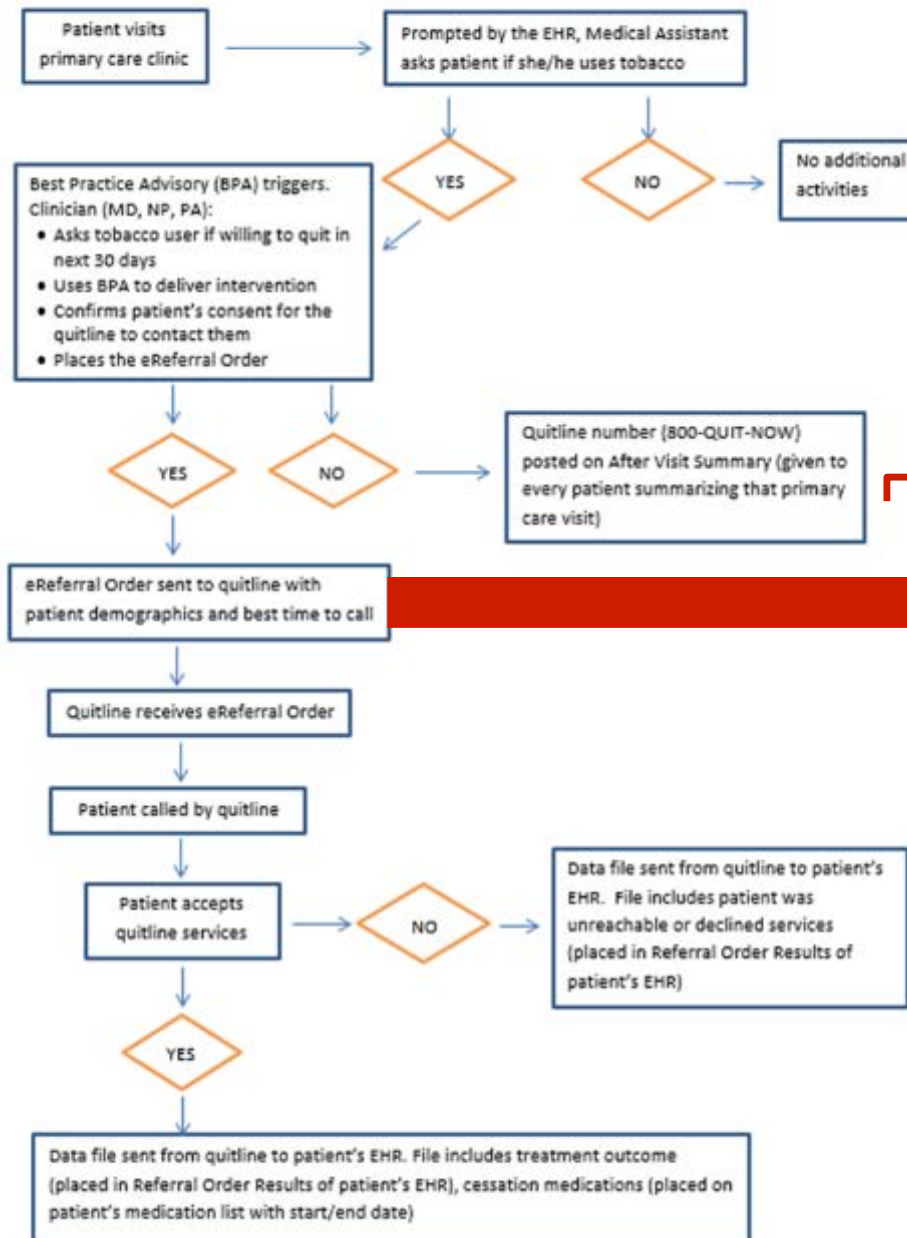
Defer



Apply Selected

Adsit R, Fox B, Tsiolis T, et. al. *Using the Electronic Health Record to Connect Primary Care Patients to Evidence-based Telephonic Tobacco Quitline Services: A Closed-loop Demonstration Project*. *Transl Behav Med*. 2014 Sep; 4(3): 324–33

Electronic Health Record (EHR)-based Referral (eReferral) to the Wisconsin Tobacco Quit Line with Quitline Treatment Services Feedback to Referring Clinician via Patient EHR



Patient Visit Summary

Quitline number (800-QUIT-NOW) posted on After Visit Summary (given to every patient summarizing that primary care visit)

Tobacco Quitline Order

eReferral Order sent to quitline with patient demographics and best time to call.

SmartSet

SMOKING CESSATION DHS AMB

Association Primary Dx Edit Item Favorite Pharmacy Providers Questionnaire Health Maint Accept/Pend Accept/Sign Sign/Print Cancel

▼ SMOKING CESSATION

- ▼ Documentation for Progress Note
 - SMOKING CESSATION HISTORY (Can be Asked by Rooming Staff)
 - SMOKING CESSATION DOCUMENTATION
- ▼ Provider Medication Choice Recommendation - *Read Only - Do not check box*
 - SMOKING CESSATION MEDICATION CHART *Rt click and READ ONLY
- ▼ Chantix (Varenicline) Prescribing Instructions
 - CHANTIX PRESCRIBING INSTRUCTIONS-*Rt click and READ ONLY
- ▼ First Line Medication (Do not order a rescue medication with Chantix) The full 12 week course of medicine
 - CHANTIX STARTING MONTH PAK - DHP Tier 1, 0.5 MG TAB X 11 & 1MG TAB X 42
 - CHANTIX CONTINUING MONTH PAK - DHP Tier 1, 1 MG BID, QTY-60
- ▼ Alternative Medications instead of Chantix
 - BUPROPION SR 150 MG - DHP Tier 1, ONE TAB DAILY FOR FIRST 3 DAYS, THEN 1 TWICE DAILY
 - NICOTINE 21 MG/24 HR TRANSDERMAL PATCH # 30, refill x 2
 - NICOTINE 14 MG/24 HR TRANSDERMAL PATCH #30, refill x 2
 - NICOTINE 7 MG/24 HR TRANSDERMAL PATCH #30, refill x 2
- ▶ Rescue Medication (Not to be used with Chantix)
- ▼ Diagnosis - Not covered by Medicare *** Must add additional condition diagnoses if available ***
 - TOBACCO USE DISORDER
- ▼ Use Association button to ATTACH CONDITION DIAGNOSIS
 - SMOKING CESSATION COUNSELING 3-10 MINUTES - Use for NON-Medical Assistance patients
 - SMOKING CESSATION COUNSELING > 10 MIN - Use for NON-Medical Assistance patients
- ▶ Charge to Use for Medical Assistance patients
- ▼ LOS - 25 Modifier Has Already Been Added - Select One

Right click data row to edit. Loading SmartSet succeeded.

SmartSet Notes

The Wisconsin Tobacco Quit Line will assist patient's in determining if their insurance will cover the medications prescribed. If their insurance does not cover the prescription, WTQL will assist on getting them covered. DHP DOES cover the medications listed.

REMINDER - For Medicare billing Do not use dx 305.1 (Tobacco use disorder) as the primary dx; For Medicaid, Use diagnosis 305.1

Legend

- Standing order
- Future order
- Interaction alert
- Previously defaulted

Lindholm C, Adsit R, Bain P, et al. *A Demonstration Project for Using the Electronic Health Record to Identify and Treat Tobacco Users.* WI Med J. 2010 Dec;109(6):335-340.

Tobacco Quitline Order

After Visit Summary

WI Tobacco Quitline Referral

External Referral, Other

Status: Expected: Approx. Expires:

Class:

Referral: Type:

To provider:

To loc/pos:

To prov spec:

Patient consented for this Referral

Best Time to Reach Patient?

Nicotine Replacement Therapy Authorization

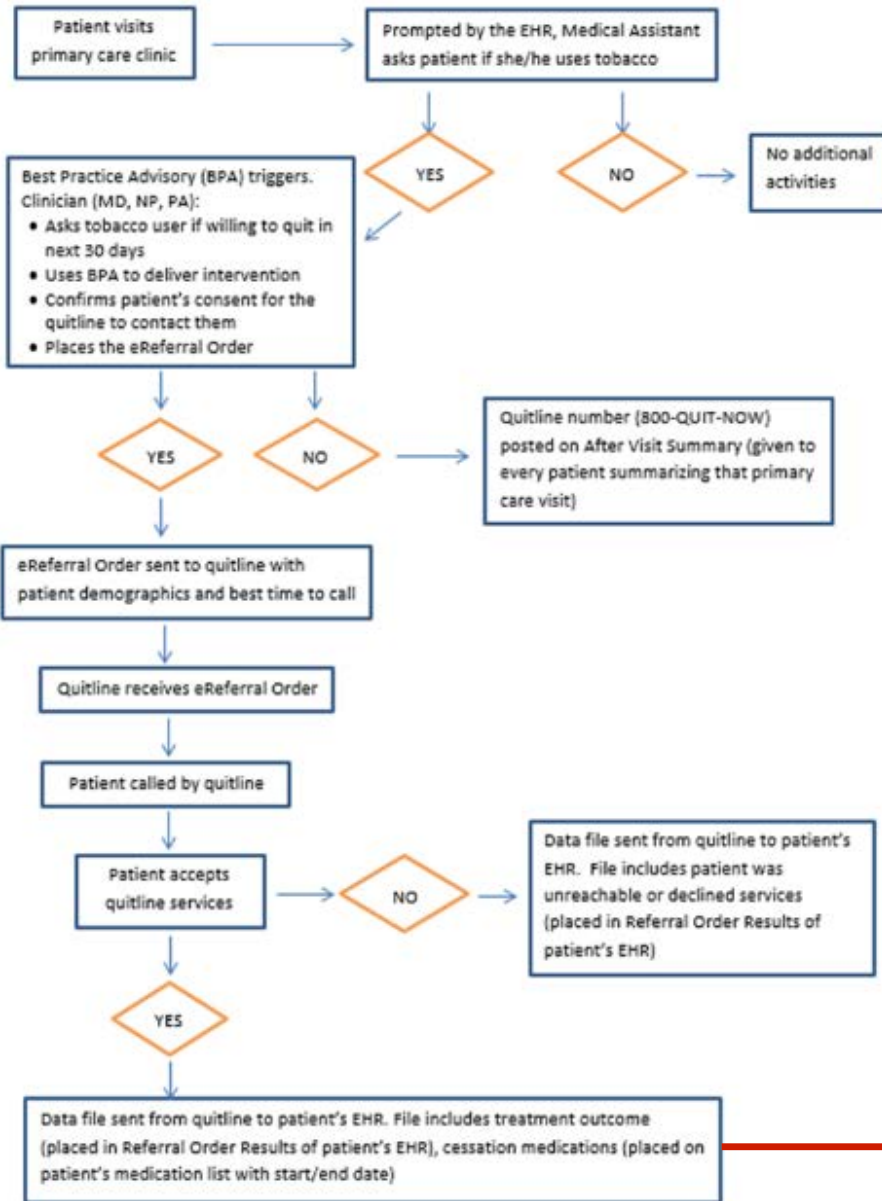
Comments (F6): [I have discussed tobacco cessation counseling with the patient. He agrees to a referral to the Wisconsin Tobacco Qui...](#)

Tobacco Use

Congratulations on your decision to talk with the Wisconsin Tobacco Quit Line (800-QUIT-NOW) for free nicotine medicine and free phone counseling. The Quit Line will be calling you within the next few days.

Adsit R, Fox B, Tsiolis T, et. al. *Using the Electronic Health Record to Connect Primary Care Patients to Evidence-based Telephonic Tobacco Quitline Services: A Closed-loop Demonstration Project.* *Transl Behav Med.* 2014 Sep; 4(3): 324-33

Electronic Health Record (EHR)-based Referral (eReferral) to the Wisconsin Tobacco Quit Line with Quitline Treatment Services Feedback to Referring Clinician via Patient EHR



Quitline eReferral Order Result

Data file sent from quitline to patient's EHR. File includes treatment outcome (placed in Referral Order Results of patient's EHR), cessation medications (placed on patient's medication list with start/end date)





WISCONSIN TOBACCO QUIT LINE REFERRAL

Status: Final result (Resulted: 9/9/2016 9:19 AM)

9/9/2016 8:19 AM - Quitline Rslt In Edi

Component Results

Component

Contact Date

20160909

Call Disposition

One-Call Program

Consult Status

Active

Treatment Plan

Patch21mg 2 Weeks

Quit Date

20160911

Lab and Collection

WISCONSIN TOBACCO QUIT LINE REFERRAL on 9/9/2016

Closing the eReferral Loop: Tobacco Quitline Order Result

Adsit R, Fox B, Tsiolis T, et. al. *Using the Electronic Health Record to Connect Primary Care Patients to Evidence-based Telephonic Tobacco Quitline Services: A Closed-loop Demonstration Project.* *Transl Behav Med.* 2014 Sep; 4(3): 324–33

Epic System's Healthy Planet

Population Health

Coordinate care across a community of providers with Healthy Planet



Bring in data from any vendor source, including claims, revenue, and other EHRs.



Create a single longitudinal plan of care accessible to patients, providers, care managers, and affiliates.



Communicate with other EHRs and allow external providers to review and resolve care gaps through a web-based care management portal.



Engage the patient by providing access to key health data, self-service capabilities, and health & wellness reminders through an EHR-agnostic patient portal.



Implement and support your program with business intelligence scientists.



Get a deeper understanding of costs to better manage resources.

<https://www.epic.com/software#PopulationHealth>

Healthy Planet – Tobacco

Tobacco software module

- Tobacco Registry
- Dashboard
- Best Practice Advisory
- Smoking Cessation SmartSet
- Referral Orders to external resources
- Medication Orders
- Incoming Referral Order Results
- SmartText
- “Care Management” Flowsheets

Implementation Project with Wisconsin Health System

- The clinical program deploys EHR tools designed to streamline tobacco dependence treatment for primary care clinicians and the Tobacco Cessation Outreach Specialist (TCOS)
- Key components of the program are:
 - Systematic identification of patients who smoke
 - Assessing patient willingness to set a quit date
 - Offering all patients evidence-based smoking cessation treatment
 - Proactive outreach to patients not seen at the clinic

Smoking Cessation SmartSet

- Brief Intervention:
 - Diagnoses, i.e. Tobacco Dependency
 - Counseling documentation
 - Referral to internal TCOS staff and external resources
 - Medications
 - Patient Instructions for After Visit Summary
 - Charges for billing

Population Health Approach

- Reach all smokers in the health system
 - Clinical interventions
 - Patients not presenting to clinics
- Tobacco Cessation Outreach Specialist uses a SmartSet and Flowsheets to:
 - Follow up with all patients after a clinic visit
 - Refer to external resources
 - Conduct annual outreach to smokers on the Tobacco Registry who have not had a face-to-face clinic visit

TCOS – Patient Follow-Up

- Follows up with all clinic patients who smoke
- Patients who set a quit date and were referred to the TCOS
 - Connects with patients before their quit date
 - Connects with patients after their quit date and follows up 6 weeks after the quit date
- Patients who did not set a quit date
 - Attempts to reach patients within a week of their clinic visit
 - Checks if now willing to quit and use treatment

TCOS – Annual Outreach

- Outreach intervention component for patients who do not visit the clinic:
 - Runs a report to find every “Current Smoker” who has not visited the clinic in the past year
 - “Cold calls” patients to offer cessation support
 - Provide tobacco cessation counseling to all patients willing to quit or reduce
 - Order OTC NRT
 - Offer eReferrals to quitline and SmokefreeTXT

Information Technology

IT Build Resources

Systems with **Epic EHR**:

- **UserWeb** - Your system IT staff are familiar with this Epic customer resource (password protected)
- Search
 - **“Smoking Cessation Intervention Using a Tobacco Quitline”** (Outpatient)
 - **“Smoking Cessation Treatment Beginning During Inpatient Admission”** (Inpatient)

Information Technology (continued)

IT Build Resources

Systems with **non-Epic EHR**

- Does EHR vendor assign a **technical support person(s)** to your health care system?
- Does EHR vendor provide **technical documents and support** for building referral orders, order results, and interfaces?
- Your system IT staff can answer these questions

Action Steps

- What are your goals to improve tobacco use assessment and treatment?
- How can you use the EHR to help providers/system achieve tobacco use identification and treatment quality/performance goals?
- Who can you garner support from?
- What are your next steps?

Questions?

Amy Skora
askora@ctri.wisc.edu
608-219-8673

www.ctri.wisc.edu

**Tobacco
Health
Systems
Change**



THANK YOU

For questions regarding today's webinar, please contact:

**Tani Hemmila
themmila@icsi.org**

ICSI Institute for Clinical
Systems Improvement
Transforming health care, together

ClearWaySM
MINNESOTA